

Eros homme ← → femme  
campus, acrylic, 120x80cm, 2022



# Portfolio

---

## BIOGRAPHY

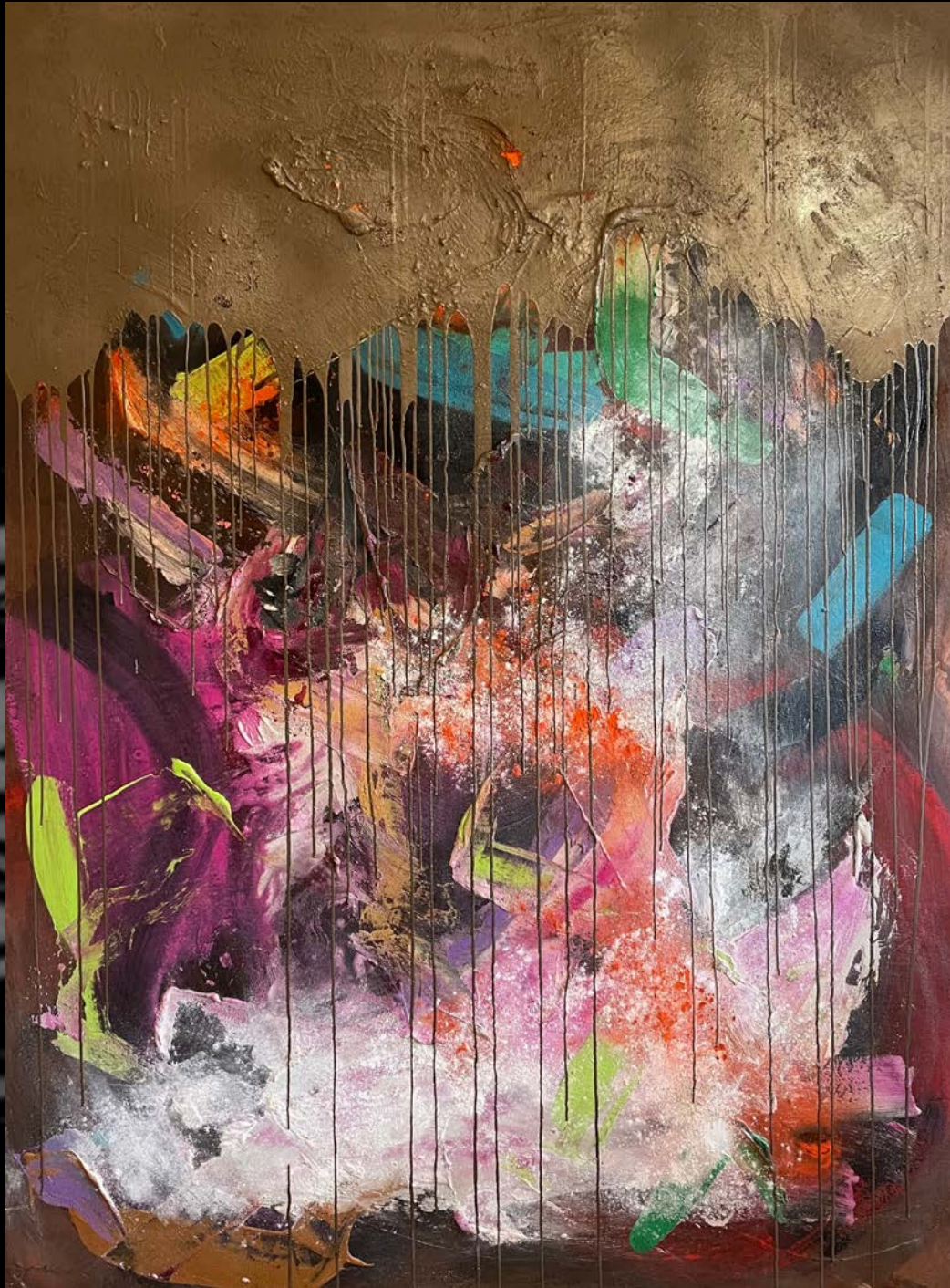
---

*Born in 1966. Since his teenage years, he has had a strong desire to "express" himself, and after a series of twists and turns that took him to the apparel design and music industries, he designed and constructed his own interior design store in his early thirties. He had intended to focus mainly on interior design sales, but the store's design led to a flurry of store design jobs, and before long, he was working as a spatial designer. He has been active as a space designer. He has designed and created more than 200 spaces in Japan. After turning 50 years old, he quit expressing himself within the limitations of client's wishes and budget, and in 2021, based on the methods and expressions of space design that he had experienced, he obtained the freedom of expression to create paintings without being bound by anything. The sea of imagination has broken and is overflowing with vigorous activity.*



## ARTIST STATEMENT

---



*Midnight Camouflage*

campus, acrylic, resin, 97x130.50cm, 2022

*"The urge to visualize 'poetic things' like music, which are invisible to the eye but firmly present in the changing times and the daily flow of time.*

*For example, the concept of 'time,' which progresses from the past to the future, is not displayed as a one-way arrow from the past to the future.*

*It is 'just there' as if it surrounds the surroundings in which it exists.*

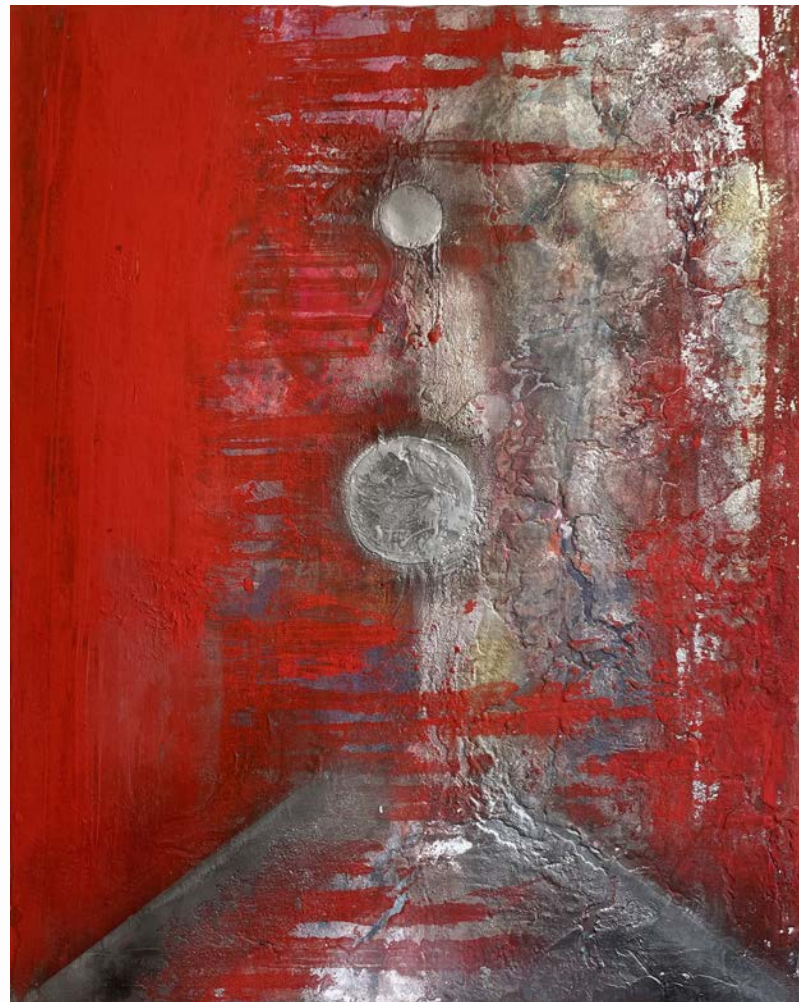
*As we are tossed around by information and the evolution of the Internet, the way we perceive things is becoming more uniform.*

*We have already been drilled from over our heads with the fundamental education and environment for thinking, so we speak 'words' to maintain balance.*

*I would like my works to trigger a change in our casual everyday life. With this in mind, I hope to express the world my inner poetry points to."*

# ARTWORKS

*Cinder of Love*  
campus, acrylic, resin, 60.70 x 73cm, 2022



*Future Engine*  
campus acrylic, 73x91cm, 2022



*Cyclamen Flower of jealousy*  
wood panel, plaster base, acrylic, 87x87cm, 2022

---

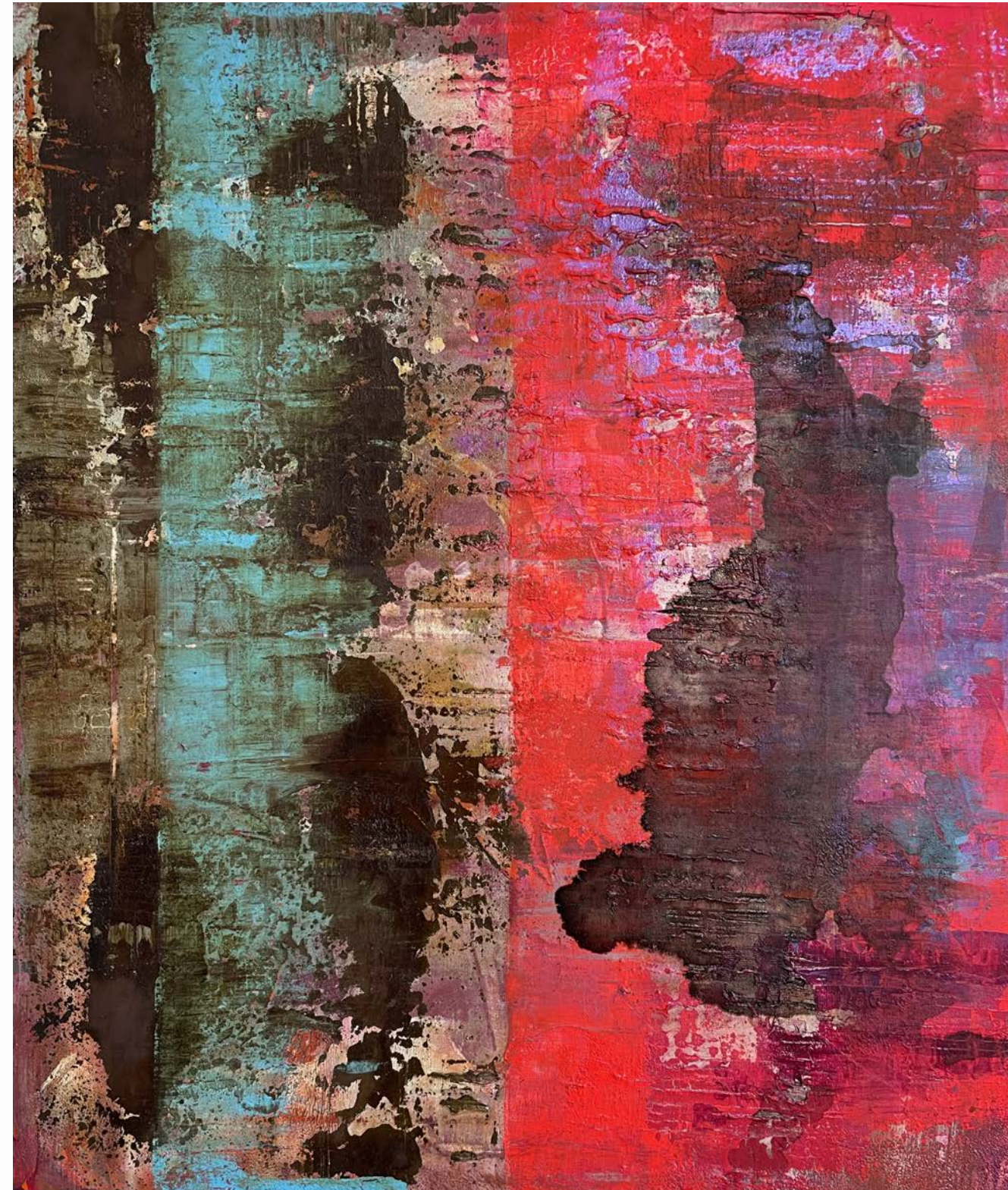
*Abstract and decorative intertwine, creating new combinations and textures. The images he creates are poetic, seeming to wander lightly through the thoughts of the mind. The colours wander through space unconstrained and unconstrained by anything. Colour, like the soul, floats in the environment describing shapes and creating new combinations.*

*Ambivalent*  
wooden panel, plaster base, acrylic, resin, 59x80cm, 2022

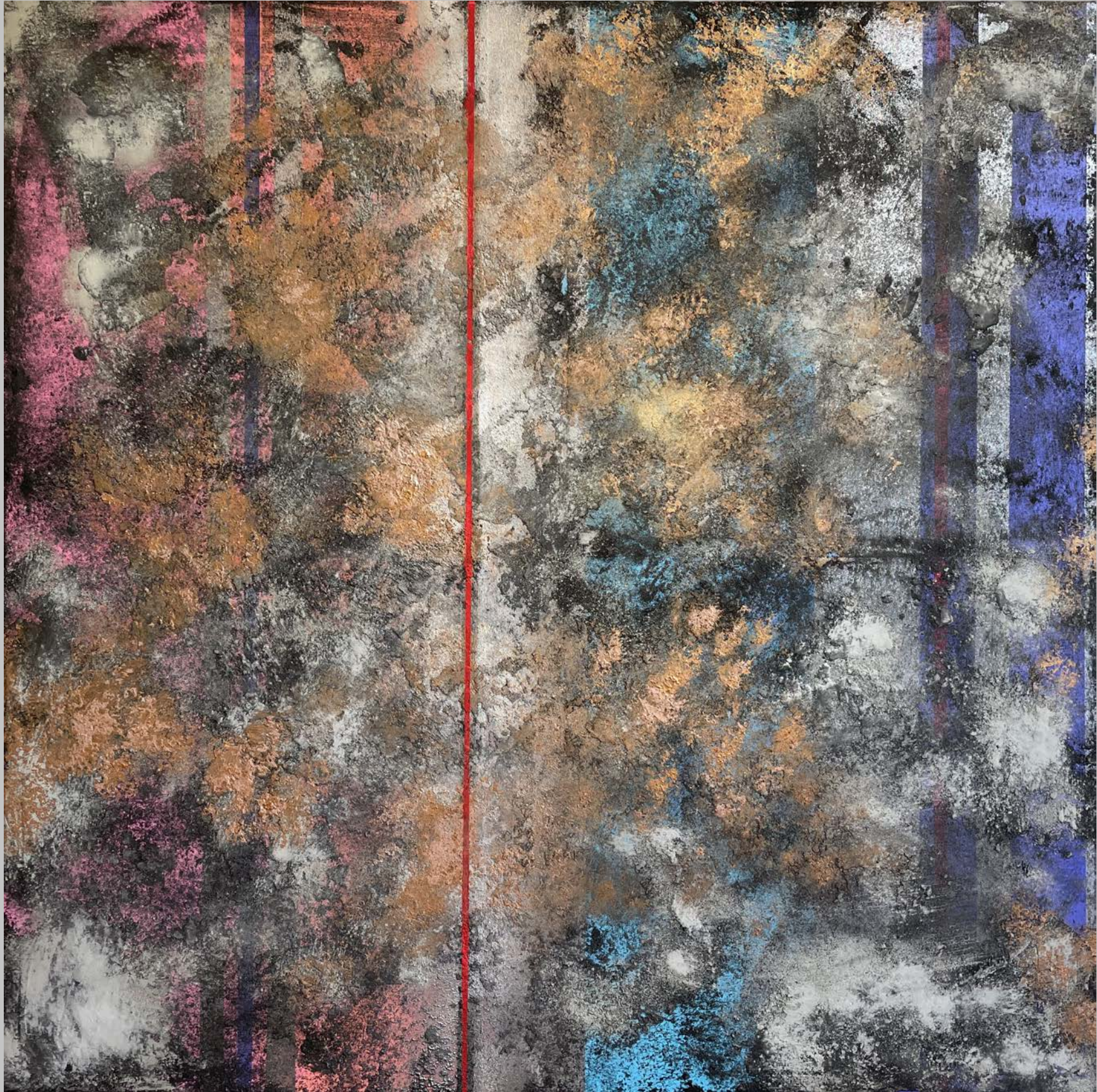




*Back of the moon*  
campus acrylic, 73x91cm, 2022



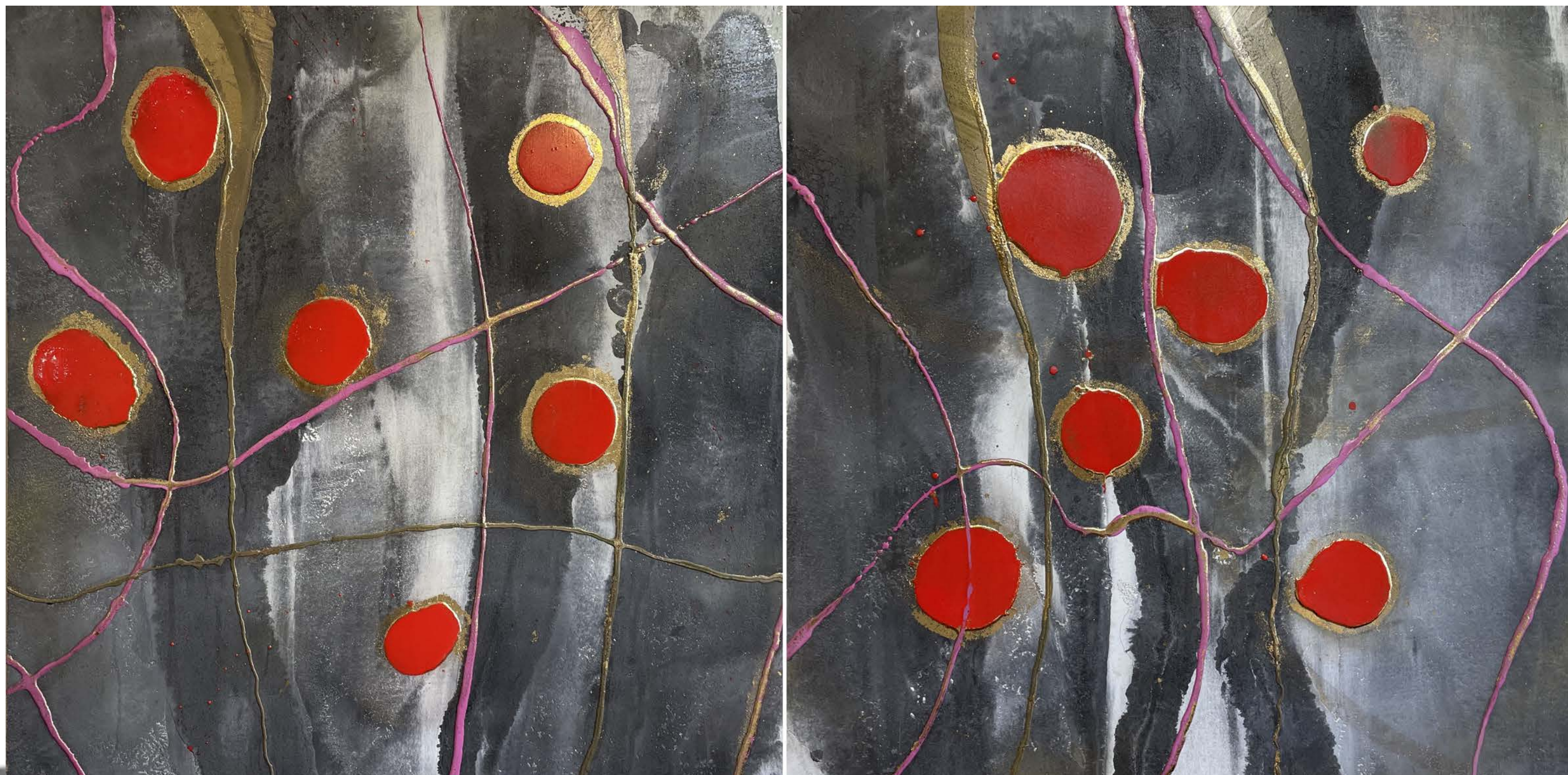
*Afterimage of you, my love*  
campus acrylic, 60.70x73cm, 2022



**Fast Passion**

campus acrylic, 117x117cm, 2022

*The images he creates are material, overwhelming. Through colour he narrates experiences and sensations that are sometimes turbulent and full of contradictions, sometimes lighthearted. SOU has the ability to collect external stimuli and innermost intimate ones, combining them in harmonious compositions.*



*Born Seeds of Hope, Right and Left*  
wood panel, plaster base, acrylic, resin, 168×84cm, 2022



*L'homme dort doucement*  
campus plaster acrylic, 60.70 x 73cm, 2022



*Flare*  
campus acrylic, 60.70x73cm, 2022



*Beyond the line*

wood panel, plaster, resin, acrylic 86.50x86.50cm, 2022



---

*The artist is able to express his inner poetry, transmitting it to the viewer.*

*Blue moon*

acrylic on canvas, 60.70 × 73cm, 2022



In his artworks, SOU makes the irrational graphically visible. He narrates an inner world through contrasts and textures. Tangles of colour, material overlays, light colours and abysmal greys.



*Reviving birds*

canvas acrylic, 97x130.50cm, 2022

# CONTACT

---

## WEBSITE

[souartist.com](http://souartist.com)



## INSTAGRAM

[@Sou\\_yuji](https://www.instagram.com/Sou_yuji)

## EMAIL

[info@souartist.com](mailto:info@souartist.com)

---

**SOU**