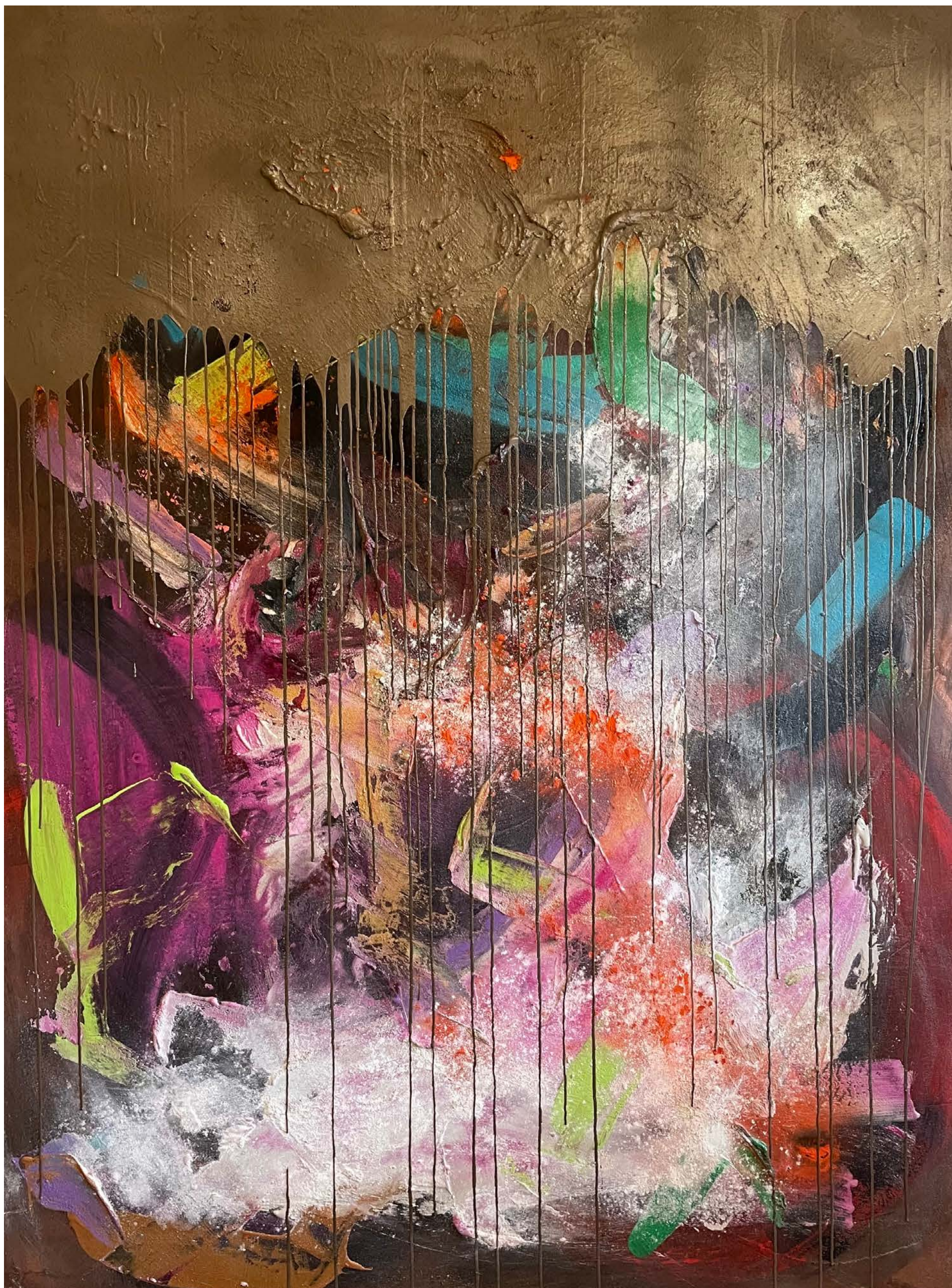


*Midnight Camouflage*

campus, acrylic, resin, 97x130.50cm, 2022



---

SOU

---

**SELECTED  
ARTWORKS**

---

## *Cyclamen Flower of jealousy*

wood panel, plaster base, acrylic, 87x87cm, 2022

*The artwork is created through an endless swirl of passion and energy. The life force that the image conveys is powerful and overwhelming. The emotional impact that the choice of colours causes when viewing the image is overwhelming. One glance and we immediately project ourselves into the artist's emotional sphere. Nothing makes sense if passion, motivation and perseverance are missing. The impetuous red colour mixes with the elegance of use and the preciousness of gold. out of chaos comes a dynamic mix.*





### ***Future Engine***

campus acrylic, 73x91cm, 2022

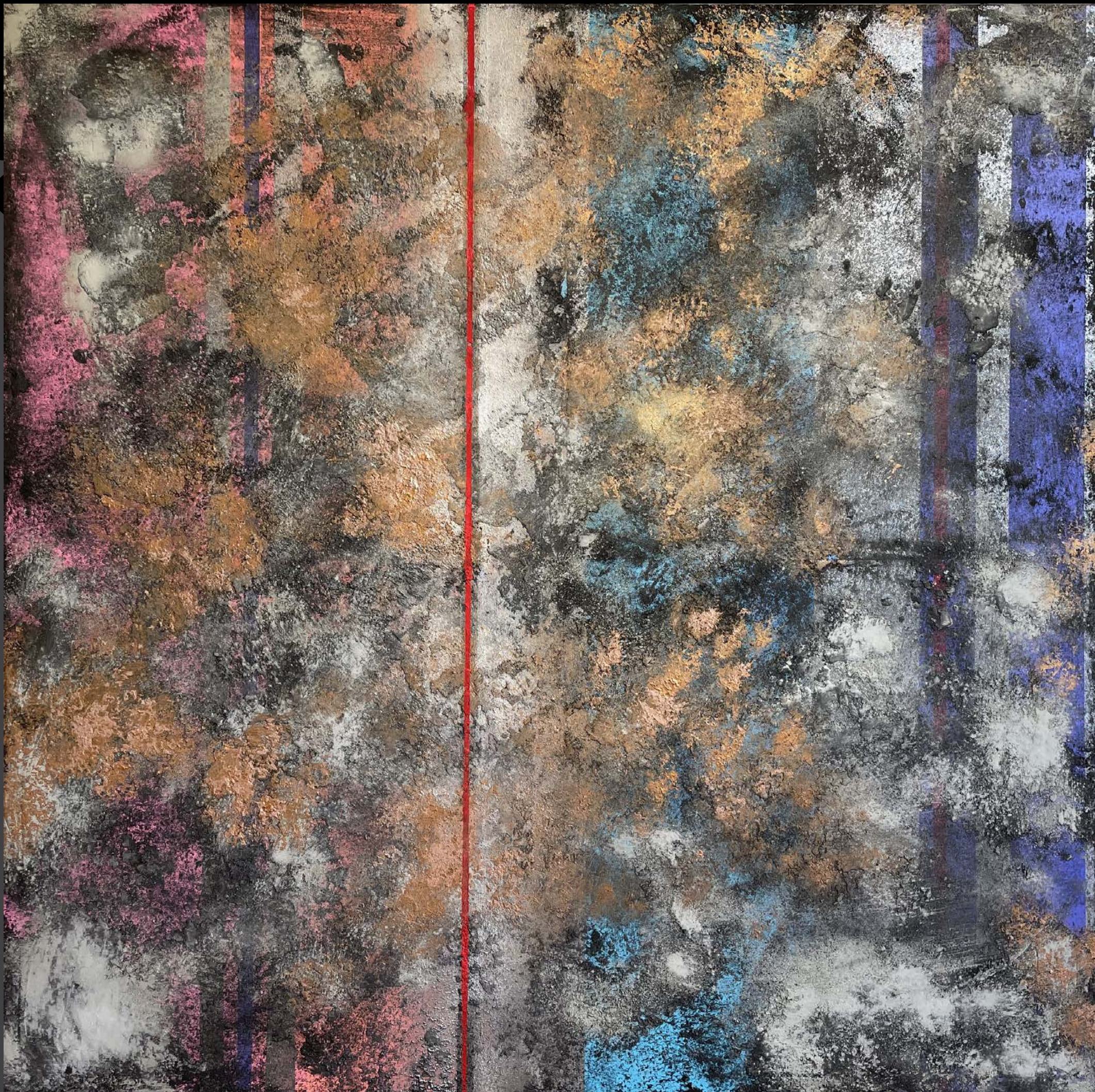
Red is one of the colours that most identifies the author of this piece. The red of passion, of feeling, of will. In this work, this chromatic hue is mediated by a softer colour that softens the emotional heaviness of red and calms the soul. The result is a play on contrasts and shapes. Visually, the artist also experiments with different textures, testing them with the most energetic colour ever. A mix of overlays, transparencies and reflections animates the painting.

---

## Fast Passion

campus acrylic, 117×117cm, 2022

*Blue and pink, vertical and horizontal. Through a dance of colours, an intersection of lines, softer textures and vivid colours, the message of this artwork is that one must often go beyond appearances, overcome those barriers that in everyday life seem insurmountable. The artist also deals with the theme of the elusiveness of emotions and how they are ephemeral, as powerful as they are not durable and variable.*





**Eros homme ↔ femme**

campus, acrylic, 120×80cm, 2022

SOU highlights the various facets of love, a feeling that is as overwhelming as it is chaotic. It erupts suddenly and is destined to expand, to expand in time and space. The colour has a dual texture: it appears powdery but is diluted with water in certain areas, giving movement and eliminating static. Love is a difficult concept to express in its entirety, so the artist decides to deal with a portion of this feeling, namely eros, the love part. Eros is a fire that never goes out, destined to burn.



**Afterimage of you, my love**

campus acrylic, 60.70×73cm, 2022

*The two sides of the same coin, good and evil. Warm and vital red in contrast with an icy blue, cold and hostile. A mix of sensations that find their balance at the centre. The two sides interact with each other, influencing each other. One tries to pierce the surface of the other to gain the upper hand, but what is achieved is parity, the perfect, harmonious balance between two opposing elements. Opposites attract.*



### ***Born Seeds of Hope, Right and Left***

wood panel, plaster base, acrylic, resin, 168×84cm, 2022

*There is a clear reference to the natural world, to the sinuous lines of the branches, and to the precious fruits that the earth offers us. Nature meets SOU's graphic style. Few elements but extremely evocative. The artist experiments with shapes, juxtaposing soft lines with bolder strokes. He lets his movement on the canvas be recorded through subtle, light brushstrokes, creating a kind of dance, an infinite rhythm that unites body and soul.*



**Back of the moon**

campus acrylic, 73x91cm, 2022

The moon. Unreachable surface. Light and shadow chase each other to give a sensation of splendour and materiality. The result is an eternal image, frozen in time and imbued with an immutable and precious beauty.





## **Flare**

campus acrylic, 60.70x73cm, 2022

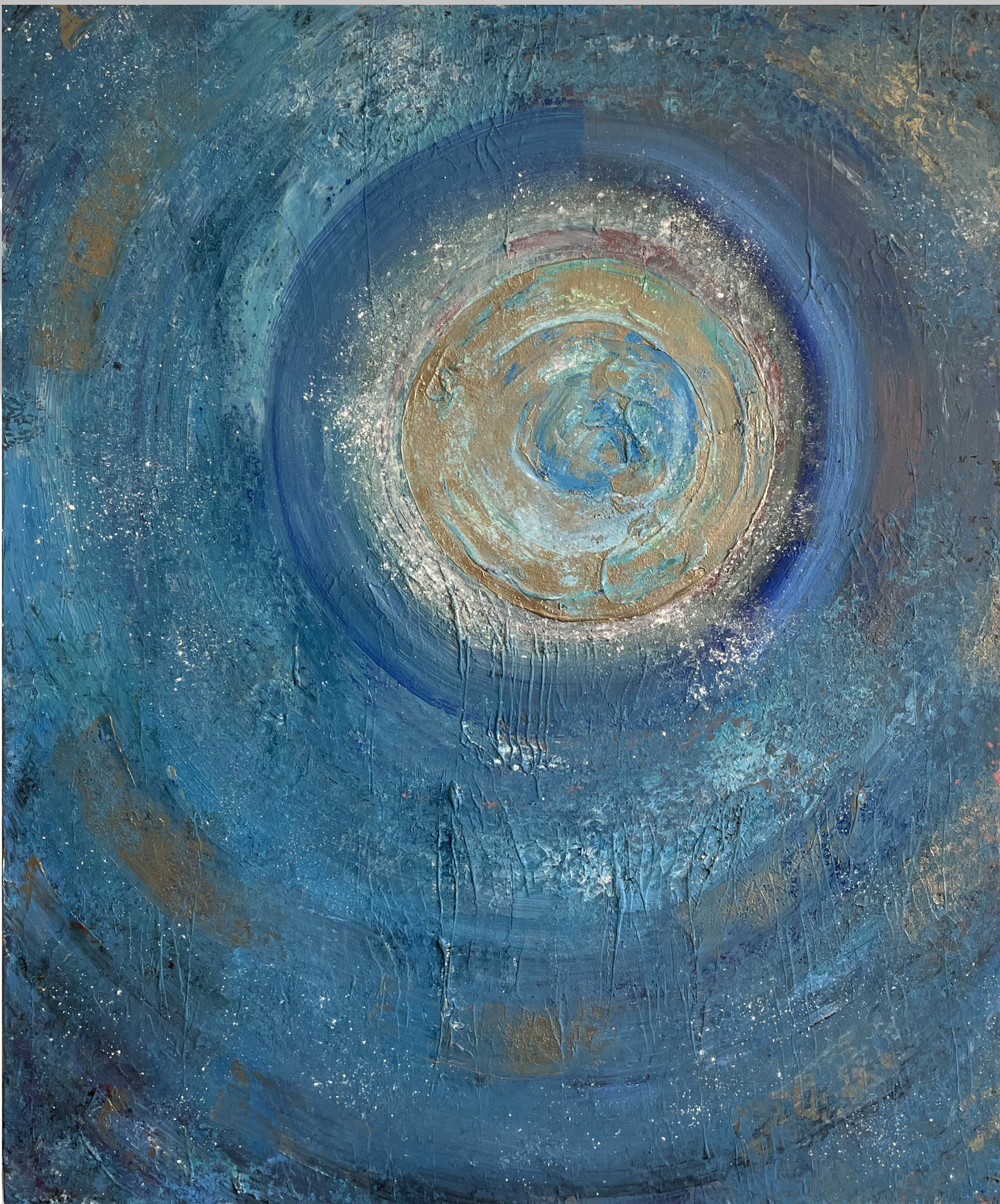
*Fire and flames. desire burning incessantly. all emotions are assimilated into one image. A whirlwind that pulls everything along with force. A few flashes here and there, a strong reminder of the natural world and phenomenology. The artwork has a strong emotional impact thanks to the clash of colours. orange and deep red challenge the overwhelming and absolute black.*

---

## Blue moon

acrylic on canvas, 60.70 × 73cm, 2022

*The theme of nature and the stars recurs. Natural phenomena fascinate the artist and lead him to construct images somewhere between abstraction and real forms. The circle represents something that has no beginning and no end, symbolising life, perfection and balance. The colour blue is meditative. What catches the eye most is the luminosity of SOU's works. They appear as shiny and precious with a material texture, as if recreating three-dimensional surfaces.*





***Beyond the line***

*wood panel, plaster, resin, acrylic 86.50x86.50cm, 2022*

One must go beyond the objective view of things, explore the unknown and discover unexpected things. Beyond the limits we set ourselves, represented by the white vertical brushstrokes, there is a world to be discovered.

---

---

## *L'homme dort doucemen*

campus plaster acrylic, 60.70 x 73cm, 2022

The discount between surfaces, between dots and lines, between warm and cold colours, light and shadow. A heterogeneous mix that instead of producing chaos creates harmony and peace, favouring the confrontation between outer and inner appearance.



## Reviving birds

campus acrylic, 97x130.50cm, 2022

Heterogeneous forms chase each other across the golden surface as if in a dance. Elements floating in space, flying lightly like birds to their nest.





## **Cinder of Love**

campus, acrylic, resin, 60.70 x 73cm, 2022

*A flame that bursts into fire, such is the feeling of love. SOU has the ability to translate moods into visual poems. He knows how to use colours and gives them an immediately perceptible graphic meaning.*



## **Ambivalent**

wooden panel, plaster base, acrylic, resin, 59×80cm, 2022

*Colour has no boundaries, in art there are no rules. The beauty of this work is contained in its ambivalence, its contrasts and its dual nature. The vividness of the purple contrasts with the material grey that covers the surface indistinctly. Two souls of the same body, which do not clash but accept the existence of the other.*

# CONTACT

---



## WEBSITE

[souartist.com](http://souartist.com)

## EMAIL

[info@souartist.com](mailto:info@souartist.com)

## INSTAGRAM

[@Sou\\_yuji](https://www.instagram.com/Sou_yuji)

